

Number	Abbreviation	Species	Common Name	Girth	Specification
25	- Ac	Acer campestre	Common Maple	12-14cm	RB
24	- ACECSTREET	Acer campestre 'Streetwise'		14-16cm	RB
15	- ACE CAL	Acer campestre 'William Caldwell'	Field Maple 'William Caldwell'	8-10cm	CG
4	- ACEFAB	Acer freemanii 'Autumn Blaze'		14-16cm	CG
9	- BETPEF	Betula pendula 'Fastigiata'		8-10cm	CG
38	- CAR FON	Carpinus betulus 'Frans Fontaine'	Hornbeam 'Frans Fontaine'	8-10cm	CG
3	- CESIL	Cercis siliquastrum	Judas tree	12-14cm	RB
1	- FAGDAWA	Fagus sylvatica 'Dawyc'	Honey Locust 'Sunburst'	18-20cm	CG
4	- GLESTUNA	Gleditsia triacanthos 'Sunburst'		14-16cm	CG
11	- LIQSTSS	Liquidambar styraciflua 'Slender Silhouette'		8-10cm	CG
20	- PRJUM	Prunus 'Umineko'	Flowering Cherry 'Umineko'	8-10cm	CG
13	- SAM	Sorbus aria 'Majestica'	Whitebeam 'Majestica'	10-12cm	CG
6	- SORVI	Sorbus vilmorinii	Vilmorin's Rowan	8-10cm	CG
4	- Tc	Tilia cordata	Small-leaved Lime	20-25cm	RB

Number	Abbreviation	Species	Height	Pot Size	Specification	Density
3	- GINBIVA	Ginkgo biloba 'Variegata'	200-250cm	CG	Counted	
30	- TAXBA	Taxus baccata	100-125cm	RB	Topiary Cone	Counted
475	- TAXBA	Taxus baccata	60-80cm	Trough / Strip / RB / CG	0.25Ctr	

Number	Abbreviation	Species	Height	Pot Size	Specification	Density
97	- CORSA	Cornus sanguinea	40-60cm	5L	CG	0.6Ctr
16	- DAPXF	Daphne x transatlantica 'Eternal Fragrance'	30-40cm	3L	CG	0.3Ctr
574	- ELEG	Euonymus fortunei 'Emerald 'n' Gold'	30-40cm	3L	CG	0.2Ctr
270	- FIE3	Euonymus fortunei 'Emerald Gaiety'	30-40cm	3L	CG	0.4Ctr
43	- EUQJAGR	Euonymus japonicus 'Green Rocket'	60-80cm	15L	CG	Counted
20	- HaA	Hydrangea arborescens 'Annabelle'	60-80cm	8L	CG	0.6Ctr
579	- ILECR	Ilex crenata	30-40cm	3L	CG	0.2Ctr
44	- LAU NOB	Laurus nobilis	15L	CG	Topiary Ball on Stem	Counted
22	- LAH	Lavandula angustifolia 'Hidcote'	40-60cm	5L	CG	0.2Ctr
10	- LAVGROA	Lavandula intermedia 'Grosso'	40-60cm	5L	CG	0.4Ctr
193	- LAVST	Lavandula stoechas	40-60cm	5L	CG	0.4Ctr
143	- LIGAJRA	Ligustrum ovalifolium 'Aureum'	60-80cm	5L	Trough / Strip / RB / CG	0.25Ctr
377	- LIGVU	Ligustrum vulgare	60-80cm	5L	Trough / Strip / RB / CG	0.25Ctr
260	- PHOFRB	Photinia fraseri 'Birmingham'	60-80cm	8L	CG	0.4Ctr
202	- PITTE	Pittosporum tenuifolium	60-80cm	5L	CG	0.3Ctr
73	- POC	Pyracantha 'Orange Glow'	60-80cm	8L	CG	0.4Ctr
28	- Rke	Rosa 'Kent'	30-40cm	3L	CG	0.4Ctr
202	- SARCO	Sarcococca confusa	40-60cm	5L	CG	0.5Ctr
882	- V d	Viburnum davidii	30-40cm	3L	CG	0.4Ctr
455	- VIBOPOC	Viburnum opulus 'Compactum'	30-40cm	3L	CG	0.4Ctr

Number	Abbreviation	Species	Pot Size	Density
1	- ASTCASS	Astelia chathamica 'Silver Spear'	10L	Counted

Number	Abbreviation	Species	Bulb Size	Density
90	- NARBC	Narcissus 'Bridal Crown'	10	6/m ²
90	- NARCA	Narcissus 'Canaliculatus'	10	6/m ²
90	- NARTT	Narcissus 'Tete a Tete'	10	6/m ²
112	-	Narcissus obvallaris	10	6/m ²
112	-	Narcissus pseudonarcissus	10	6/m ²

Number	Abbreviation	Species	Pot Size	Density
250	- CARM ID	Carex morrowii 'Ice Dance'	3L	0.4Ctr

Weight	Seed Mix Name	Seed Mix Supplier	Density
104g	EM3 Special General Purpose meadow Mixture	Emorsgate	4g/m ²
226051g	EG22 Strong Lawn Grass Mixture	Emorsgate	25g/m ²

Number of Plants	Species	Height	Specification	Pot Size	Density
143	-	Cornus sanguinea	80-100cm	OG	0.3Ctr Double Staggered at 0.3m offset
707	-	Corvus avellana	80-100cm	OG	0.3Ctr Double Staggered at 0.3m offset
707	-	Crataegus monogyna	80-100cm	OG	0.3Ctr Double Staggered at 0.3m offset
67	-	Euonymus europaeus	80-100cm	OG	0.3Ctr Double Staggered at 0.3m offset
143	-	Ilex aquifolium	80-100cm	CG	0.3Ctr Double Staggered at 0.3m offset
425	-	Ligustrum vulgare	80-100cm	OG	0.3Ctr Double Staggered at 0.3m offset
58	-	Rhamnus cathartica	80-100cm	OG	0.3Ctr Double Staggered at 0.3m offset
58	-	Rosa arvensis	80-100cm	OG	0.3Ctr Double Staggered at 0.3m offset
143	-	Rosa canina	80-100cm	OG	0.3Ctr Double Staggered at 0.3m offset
143	-	Rosa rugosa	80-100cm	OG	0.3Ctr Double Staggered at 0.3m offset
67	-	Viburnum lantana	80-100cm	OG	0.3Ctr Double Staggered at 0.3m offset
143	-	Viburnum opulus	80-100cm	OG	0.3Ctr Double Staggered at 0.3m offset

Number of Plants	Species	Height	Specification	Pot Size	Density
50	-	Hebe 'Great Orme'	30-40cm	Bushy :5 brks	5L 4/m ²
47	-	Hypoxis moserianum 'Tricolor'	30-40cm	Bushy :7 brks	5L 4/m ²
47	-	Rosa 'Kent'	30-40cm	Bush	3L 4/m ²

Number of Plants	Species	Height	Specification	Pot Size	Density
44	-	Brachyglottis 'Sunshine'	40-60cm	Branched :5/6 brks	5-7.5L 4/m ²
43	-	Cistus pulverulentus 'Sunset'	30-40cm	Bushy :5/6 brks	5-7.5L 4/m ²
43	-	Hebe salicifolia	30-40cm	Bushy :5/6 brks	3L 4/m ²

Number of Plants	Species	Height	Specification	Pot Size	Density
89	-	Erysimum 'Bowles Mauve'	CG	2L	4/m ²
77	-	Lavandula stoechas	40-60cm	CG	5L 4/m ²
89	-	Nepeta racemosa	2L	4/m ²	

Number of Plants	Species	Height	Specification	Pot Size	Density
27	-	Allium giganteum	CG	4/m ²	
49	-	Echinacea pallida	2L	4/m ²	
49	-	Salvia nemorosa 'Caradonna'	2L	4/m ²	
72	-	Stipa tenuissima	CG	2L 4/m ²	
49	-	Verbena bonariensis	2L	4/m ²	

Number of Plants	Species	Height	Specification	Pot Size	Density
72	-	Bergenia 'Bressingham Ruby'	5-7.5L	4/m ²	
72	-	Choisya ternata 'Sundance'	40-60cm	Bushy :5 brks	5L 4/m ²
72	-	Euonymus fortunei 'Emerald 'n' Gold'	20-30cm	Bushy :5 brks	5-7.5L 4/m ²

Number of Plants	Species	Height	Specification	Pot Size	Density
78	-	Ceanothus 'Blue Mound'	Bushy :5/6 brks	5L 4/m ²	
78	-	Choisya 'Aztec Pearl'	30-40cm	Bushy :5/6 brks	5L 4/m ²
78	-	Prunus laurocerasus 'Otto Luyken'	40-60cm	Bushy :5/6 brks	5-7.5L 4/m ²

Number of Plants	Species	Height	Specification	Pot Size	Density
78	-	Carex morrowii 'Ice Dance'	30-40cm	Bushy	5-7.5L 4/m ²
77	-	Euonymus fortunei 'Emerald Gaiety'	30-40cm	Bushy :4 brks	5-7.5L 4/m ²
77	-	Viburnum davidii	30-40cm	Bushy :4 brks	5-7.5L 4/m ²

Number of Plants	Species	Pot Size	Density
10	-	Dianthus anatomicus (pink)	2L 4/m ²
10	-	Stachys byzantina 'Silver Carpet'	2L 4/m ²

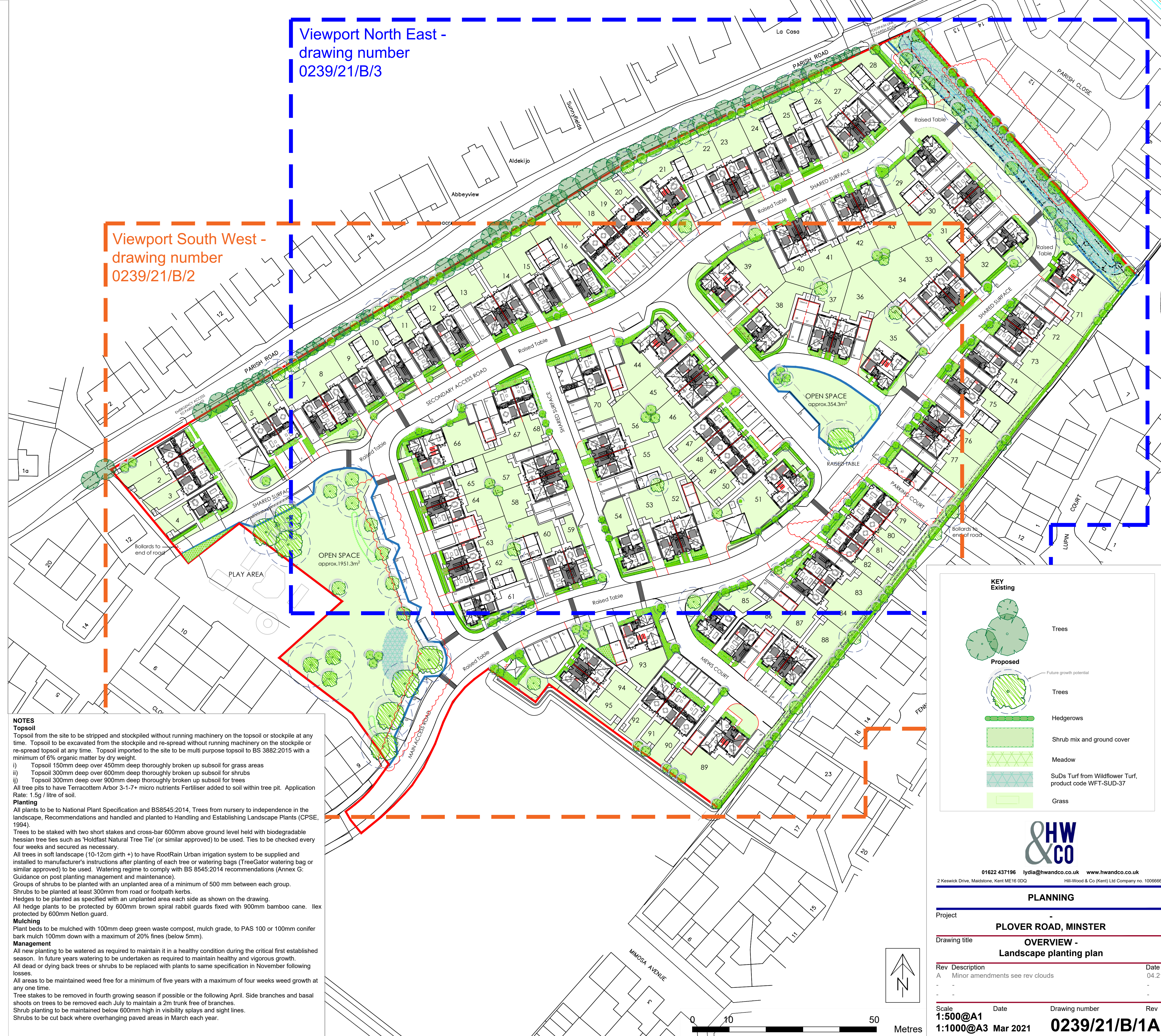
Number of Plants	Species	Pot Size	Density
5	-	Achillea 'Feuerland'	2L 4/m ²
5	-	Echinacea purpurea	2L 4/m ²
5	-	Sedum telephium 'Matrona'	2L 4/m ²
14	-	Stipa tenuissima	3L 4/m ²
5	-	Verbena bonariensis	2L 4/m ²

Number of Plants	Species	Height	Specification	Pot Size	Density
40	-	Carex morrowii 'Ice Dance'	5-7.5L	4/m ²	
40	-	Hyacinthus orientalis (Blue)	CG	4/m ²	
40	-	Lavandula angustifolia 'Hidcote'	20-30cm	Bushy :5/7 brks	5L 4/m ²
40	-	Viburnum opulus 'Compactum'	40-60cm	Bushy :5/7 brks	10L 4/m ²

Number of Plants	Species	Height	Specification	Pot Size	Density
31	-	Buxus sempervirens	30-40cm	Topiary Ball	15-20L 4/m ²
31	-	Carex testacea	2L	4/m ²	
31	-	Heuchera 'Green Spice'	2L	4/m ²	
31	-	Heuchera 'Rachel'	2L	4/m ²	

Number of Plants	Species	Height	Pot Size	Specification	Density
28	-	Euonymus fortunei 'Emerald 'n' Gold'	30-40cm	5L Bushy :5/6 brks	4/m ²
28	-	Senecio compactus	10-20cm	2L Bushy :4 brks	4/m ²
15	-	Taxus baccata	40-60cm	25L Topiary Ball	4/m ²

Number of Plants	Species	Height	Pot Size	Specification	Density
45	-	Hydrangea arborescens 'Annabelle'	60-80cm	10L Branched :5/7 brks	4/m ²
45	-	Nandina domestica	40-60cm	10L Bushy :5 brks	4/m ²
45	-	Philadelphus 'Belle Etoile'	40-60cm	5L Bushy :5 brks	4/m ²



NOTES

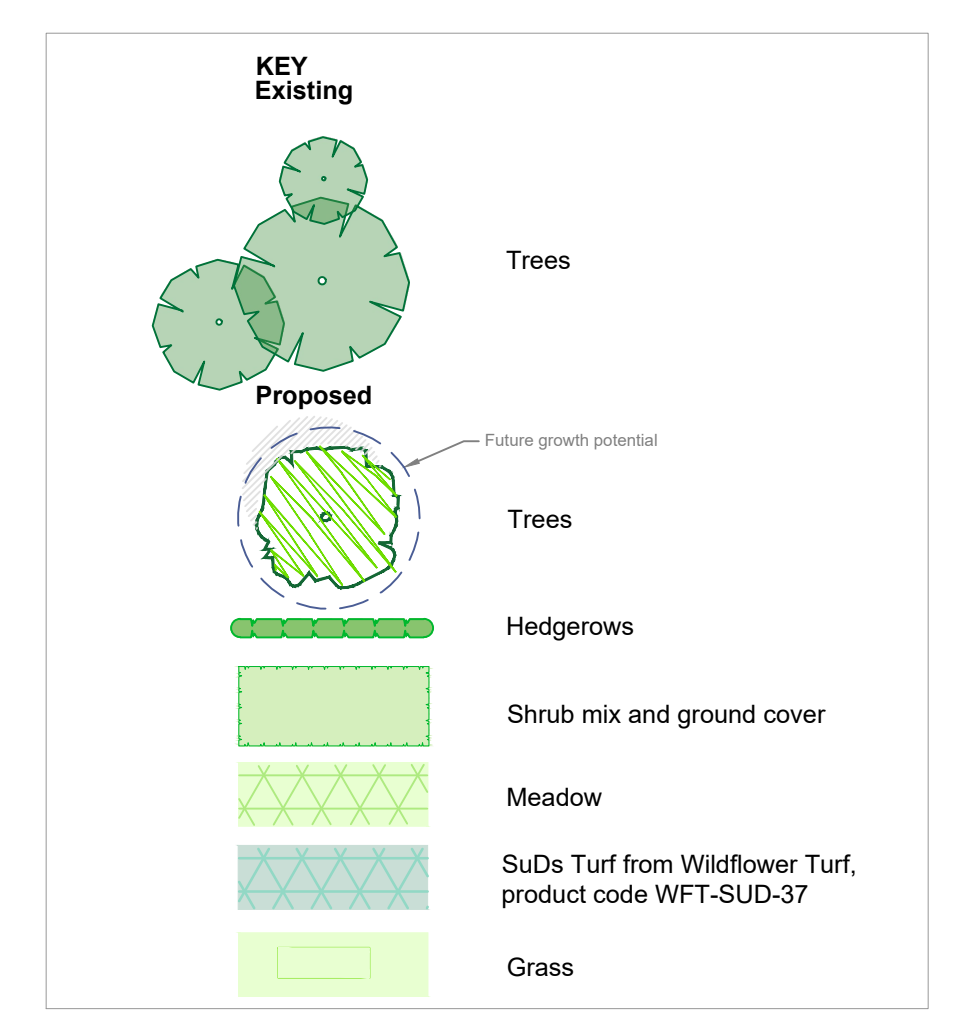
Topsoil
 Topsoil from the site to be stripped and stockpiled without running machinery on the topsoil or stockpile at any time. Topsoil to be excavated from the stockpile and re-spread without turning machinery on the stockpile or re-spread topsoil at any time. Topsoil imported to the site to be multi purpose topsoil to BS 3882:2015 with a minimum of 6% organic matter by dry weight.

i) Topsoil 150mm deep over 450mm deep thoroughly broken up subsoil for grass areas
 ii) Topsoil 300mm deep over 600mm deep thoroughly broken up subsoil for shrubs
 iii) Topsoil 300mm deep over 900mm deep thoroughly broken up subsoil for trees
 All tree pits to have Terracottem Arbor 3-1-7+ micro nutrients Fertiliser added to soil within tree pit. Application Rate: 1.5g / litre of soil.

Planting
 All plants to be to National Plant Specification and BS8545:2014. Trees from nursery to independence in the landscape, Recommendations and handled and planted to Handling and Establishing Landscapes (CPSE, 1994).
 Trees to be staked with two short stakes and cross-bar 600mm above ground level held with biodegradable hessian tree ties such as 'Holdfast Natural Tree Tie' (or similar approved) to be used. Ties to be checked every four weeks and secured as necessary.
 All trees in soft landscape (10-12cm girth +) to have RootRain Urban irrigation system to be supplied and installed to manufacturer's instructions after planting of each tree or watering bags (TreeGator watering bag or similar approved) to be used. Watering regime to comply with BS 8545:2014 recommendations (Annex G: Guidance on post planting management and maintenance).
 Groups of shrubs to be planted with an unplanted area of a minimum of 500 mm between each group.
 Shrubs to be planted at least 300mm from road or footpath kerbs.
 Hedges to be planted as specified with an unplanted area each side as shown on the drawing.
 All hedge plants to be protected by 600mm brown spiral rabbit guards fixed with 900mm bamboo cane. Ilex protected by 600mm Nettleon guard.

Mulching
 Plant beds to be mulched with 100mm deep green waste compost, mulch grade, to PAS 100 or 100mm conifer bark mulch 100mm down with a maximum of 20% fines (below 5mm).

Management
 All new planting to be watered as required to maintain it in a healthy condition during the critical first established season. In future years watering to be undertaken as required to maintain healthy and vigorous growth.
 All dead or dying back trees or shrubs to be replaced with plants to same specification in November following losses.
 All areas to be maintained weed free for a minimum of five years with a maximum of four weeks weed growth at any one time.
 Tree stakes to be removed in fourth growing season if possible or the following April. Side branches and basal shoots on trees to be removed each July to maintain a 2m trunk free of branches.
 Shrub planting to be maintained below 600mm high in visibility splays and sight lines.
 Shrubs to be cut back where overhanging paved areas in March each year.



HW & CO
 01622 437196 | lydia@hwandco.co.uk | www.hwandco.co.uk
 2 Keswick Drive, Maidstone, Kent ME16 0DD | Hill-Wood & Co (Kent) Ltd Company no. 10066666

PLANNING

Project: **PLOVER ROAD, MINSTER**

Drawing title: **OVERVIEW - Landscape planting plan**

Rev	Description	Date
A	Minor amendments see rev clouds	04.21

Scale: **1:500@A1** | Date: **Mar 2021** | Drawing number: **0239/21/B/1A** | Rev: **1:1000@A3**